



Landscape Partnership Scheme Summary

2016





Aerial view of Aveley Forest

Vision

Adopted by the Partnership in 2014, the vision of the Land of the Fanns is

“The surviving London fanns on the edge of East London – a landscape of fens, forest and farms, rich in geological, natural and cultural heritage and continually evolving since the last Ice Age – will be positively managed and understood as the **last remaining landscape of London as it once was**.

Drawing on the area’s past as a unified, working landscape underpinning London’s growth, the Land of the Fanns will spark a **rediscovering** of this landscape drawing on the pride local communities instinctively feel about this misunderstood area. This is not only about undertaking restoration and access improvements that **reconnect** the landscape, it is also about equipping people with **better knowledge and understanding** to shape the strategic decision making that continues to fragment the landscape.

The landscape is a **dynamic** one that will continue to change – a broad partnership understanding of the Land of the Fanns will not only enable that change to be more positive, it will also develop its profile as one of the **nation’s most fascinating landscapes**, intimately connected with one of the most **famous and celebrated cities in the world**.

The ‘Land of the Fanns’ will become recognised as a **connected** and **cohesive** landscape where its heritage is **loved** and **understood** by its people.”

Objectives

Supporting the vision, six strategic objectives were approved by the Land of the Fanns partnership in 2014:

1. RESTORATION AND CONNECTION

To work in partnership to restore, conserve and connect the woods, fens, farmland, unique biodiversity, heritage and cultural assets of our landscape and utilise these to support local distinctiveness and pride that reduces further negative impacts.

2. ACCESS

To improve physical and intellectual access to the landscape for local communities and visitors that encourages people to visit, respect and appreciate its natural and built assets, through targeted physical interventions and improved co-ordination of visitor destinations.

3. INFORMATION

To create outlets for local knowledge that reveals the exciting and unique stories of the landscape through inclusive methods that enthuses local people and visitors, guides decision-making and celebrates the area.

4. EXPERIENCE BY TAKING PART

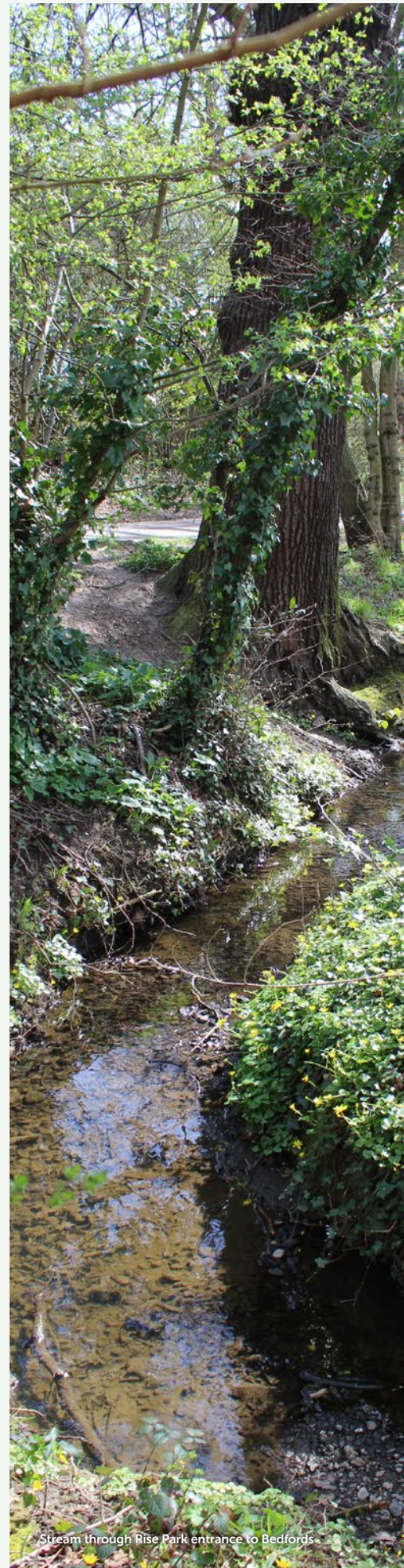
To encourage people to experience the Land of the Fanns and learn about its rich physical, natural and cultural heritage by actively taking part in conservation projects, research and interpretation activities, cultural activities, events, volunteering and learning that also improves the prospects and skills of local people.

5. ENJOYMENT OF THE LANDSCAPE

To develop the 'Land of the Fanns' into a place where local people and visitors can better enjoy the landscape through better co-ordination and commercial thinking of partnership organisations providing tourism and related services.

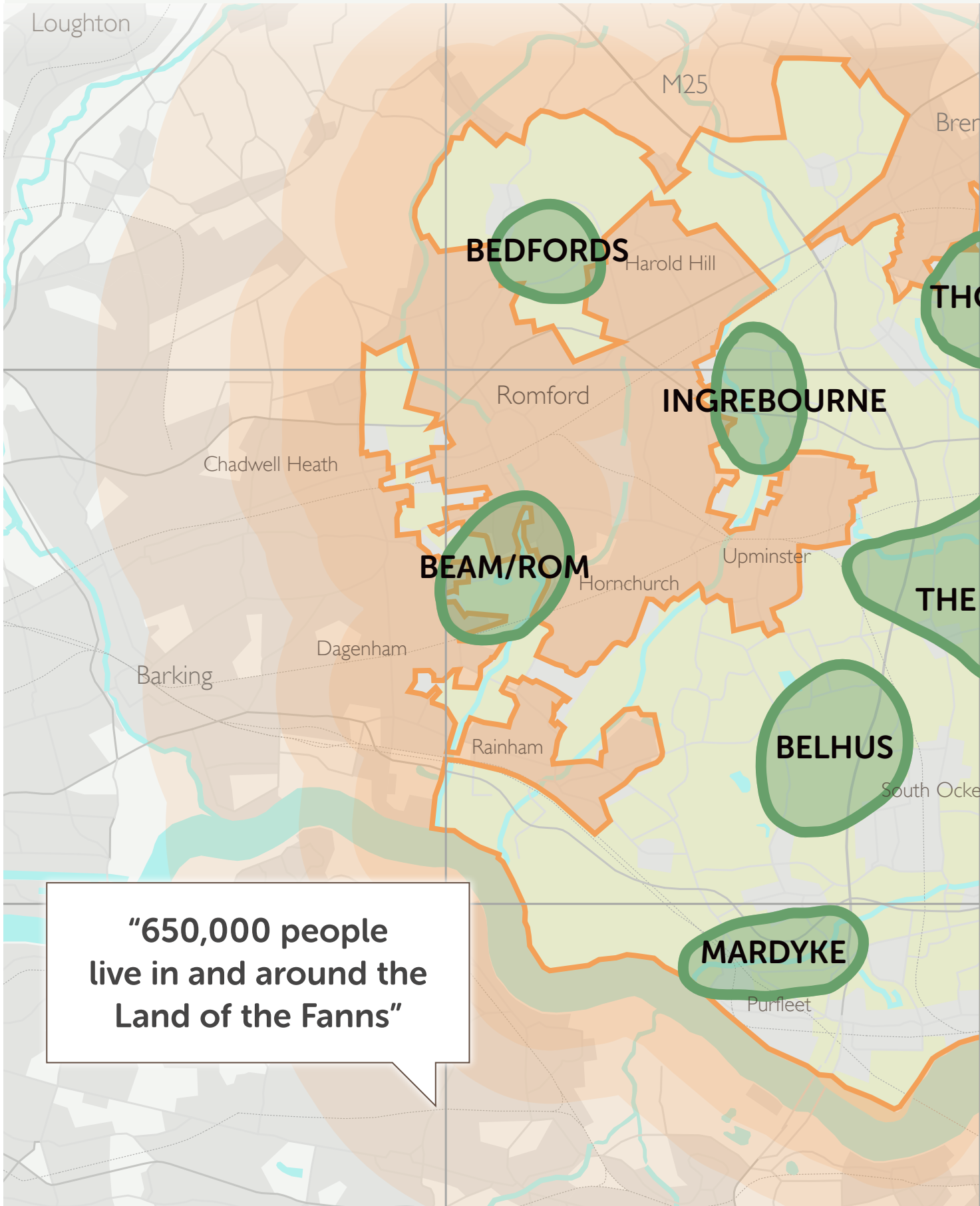
6. PARTNERSHIP WORKING

To build excellent partnership working between the key players who can make the Vision happen – the public sector, private business and the community.

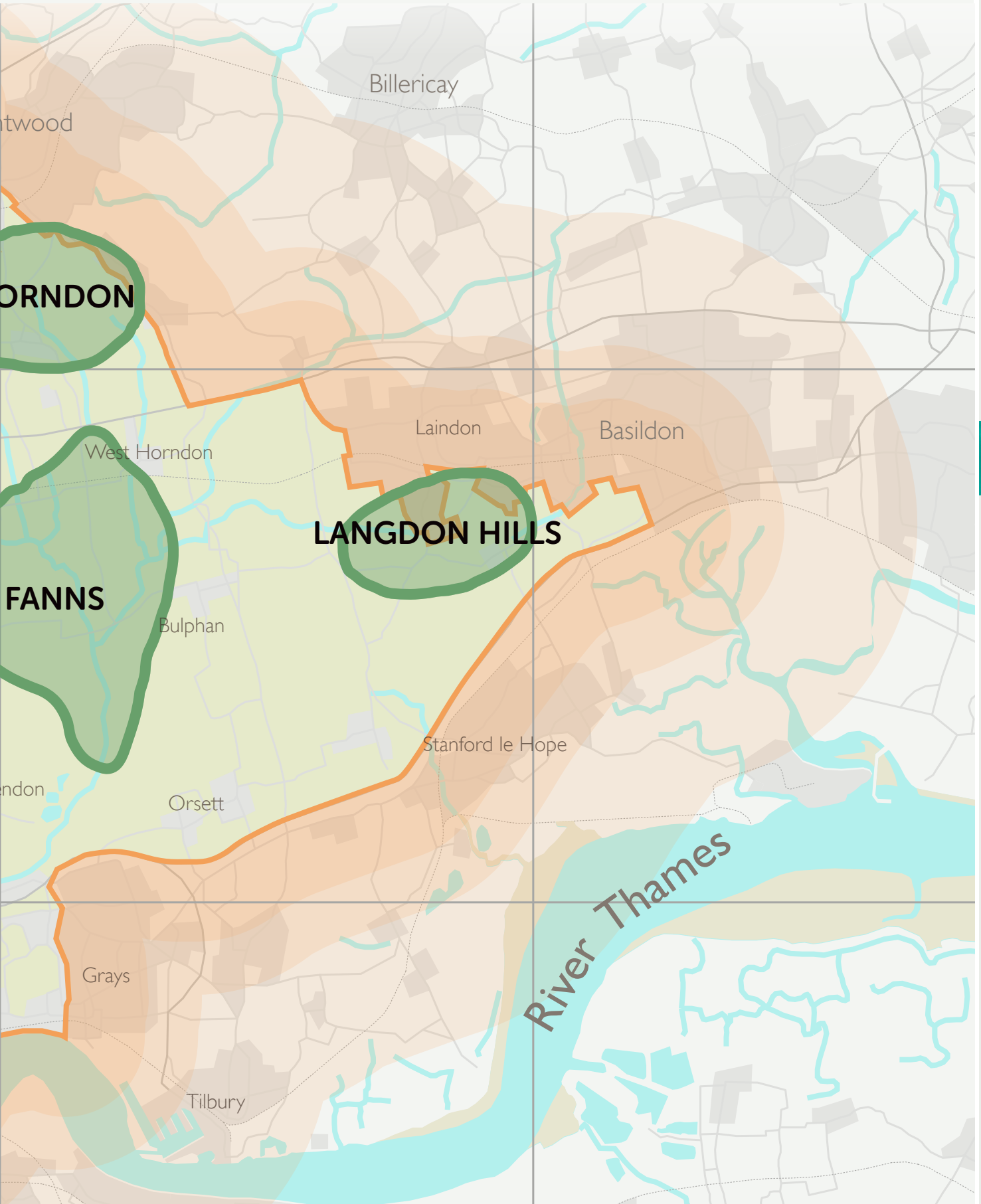
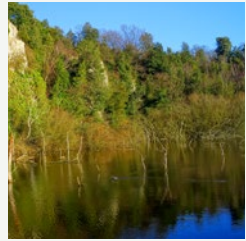


Stream through Rise Park entrance to Bedfords

Focus Areas for the Scheme



"650,000 people live in and around the Land of the Fanns"



Land of the Fanns Projects

Programme A: Restoring and Reconnecting the Land of the Fanns		
A1.1	Landscape Management Plan	To co-ordinate landscape management efforts across the Land of the Fanns through better partnership working between public and private landowners, uplifting farmland through Countryside Stewardship and supporting landscape-focussed social enterprise
A1.2	Community Tree Nursery	To develop a community tree nursery on a not-for-profit commercial basis providing genetically diverse stock for sale within the Land of the Fanns
A2.1	Woodland, Grassland and Hedgerows	To restore 60 hectares of woodland, grassland and hedgerows across the Land of the Fanns and link these to Countryside Stewardship
A2.2	Restoring Low Nutrient Habitat	To restore remnants of low nutrient habitats, which have almost vanished from the landscape.
A2.3	Rediscovering the Lost Fens	To highlight and interpret the lost 'Fann' landscape through access and restoration work
A2.4	Micro landscapes	To establish and maintain management regimes on brownfield sites for invertebrates, creating opportunities to appreciate industrial habitats within the Land of the Fanns
A3.1	River Catchments	To improve the rivers (Rom/Beam, Ingrebourne and Mardyke) of the Land of the Fanns
A3.2	Connecting Historic Landscapes	To improve access and understanding at two strategic historic landscapes (Belhus and Thorndon) within the Land of the Fanns
A4.1	Environment Skills and Training	To provide people with the skills needed to restore, understand and promote natural heritage within the landscape

Programme B: Understanding the Land of the Fanns		
B1.1	Land of the Fanns Publication	To produce a publication that brings together the history and stories of the Land of the Fanns area
B2.1	Designed Landscapes	To identify and record the changes in the Land of the Fanns landscape over time to build understanding and appreciation of its significance
B2.2	Community Mapping	To record heritage places and stories valued by communities to strengthen cultural identity and place-making in the Land of the Fanns
B3.1	Community Archaeology	To enable people to engage with the archaeological history of the Land of the Fanns within the landscape and along the River Thames

Programme B: Understanding the Land of the Fanns

B3.2	Travelling archaeological Exhibitions	To raise awareness and understanding of the archaeology across the Land of the Fanns.
B4.1	Interpreting the Fanns	To raise awareness and understanding of the landscape through physical signage and interpretation at strategic locations across the Land of the Fanns
B5.1	Heritage Skills and Training	To provide people with the skills needed to restore, understand and promote built, archaeological and cultural heritage within the landscape

Programme C: Attachment to the Land of the Fanns

C1.1	Digital Heritage	Development of an app or equivalent that collates information from Land of the Fanns projects and enables access via smartphone.
C1.2	Promoting the Land of the Fanns	To promote and celebrate the Land of the Fanns through a dynamic website and digital marketing, co-ordination of marketing at 'hub' sites and audience-generated content
C2.1	School Programme	To support teachers and young people to use the landscape in education through a Land of the Fanns education resource and a potential Forest School as legacy
C2.2	Volunteer Co-ordination	To co-ordinate existing heritage and environment volunteering opportunities across the landscape in support of the Scheme aims
C2.3	Community Action Budget	To fund a suite of local community projects that complement the delivery of the Landscape Partnership Scheme
C3.1	Landscape Champions of Tomorrow	To develop the landscape champions of the future by training volunteers and partners to support project delivery and secure the programme legacy
C3.2	Apprentice Scheme	To develop the skills and experience of 2 local young people through formal apprenticeships during the life of the Landscape Partnership Scheme

Programme D: Enjoying the Land of the Fanns

D1.1	Walking the Fanns	To enable access to the Land of the Fanns through targeted path improvements and a walking programme.
D2.1	Land of the Fanns Conferences	To bring together partners, groups and individuals from across the landscape area for an annual celebration of the Land of the Fanns
D2.2	Arts Festival	To develop an art trail/festival that celebrates the Land of the Fanns



Thames Chase Forest Centre
Broadfields, Pike Lane
Upminster RM14 3NS

Tel: 01708 642970

Fax: 01708 640581

Email: enquiries@thameschase.org.uk

www.thameschase.org.uk

